



# Vision 2.2 Release

---



# User Interface improvements

---



# Vision 2.2 with ScaleAQ design template

New Vision application link



Application startup screen





Vision

Default Configuration **Bergen office**

Monitors

Camera Control



Winch Control



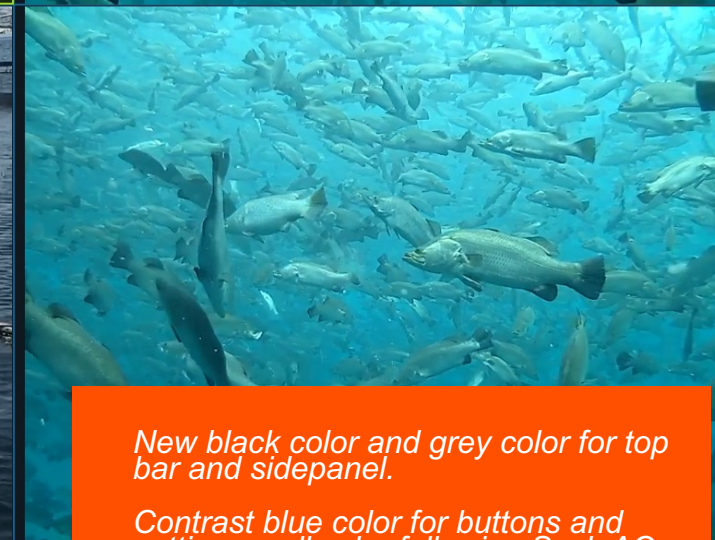
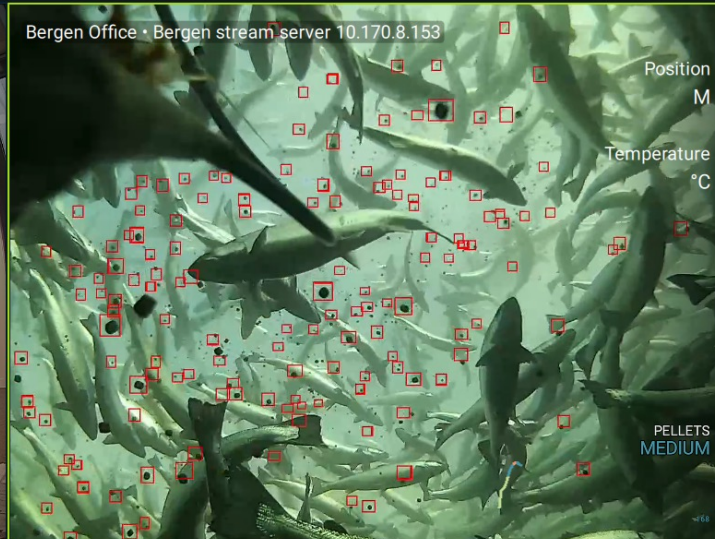
Zoom



Preset

Choose preset

Settings



*New black color and grey color for top bar and sidepanel.*

*Contrast blue color for buttons and settings – all color following ScaleAQ software design template.*

*Application icon and exit/minimize icons following windows standard.*



Camera Control



Winch Control



Zoom



Preset

Choose preset

Site BG - Bergen - 3400 10.170.8.10

5%

7 kg of 130 kg

0.0 m/s

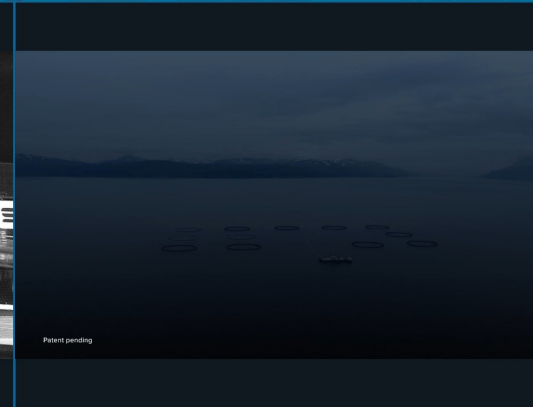
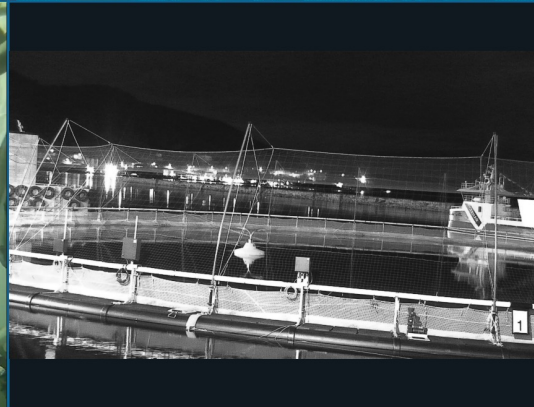
0.00 bar

Intensity - 3.1 +

START

Position 0.0 M

Temperature 27.3 °C



Diagnostics

Configuration Tool

About

Settings

Configuration tool integrated in the application



- Camera Groups
- Cameras**
- Sites
- Feeding Integration

### CAMERAS

+ ADD CAMERA

Search cameras

FILTERS

Name	Site	Type	Device	IP	
Bergen - 3400	Site BG	Underwater	Orbit-520\521 Series	10.170.8.10	⋮
Local file 10	Site BG	Demo	Demo-Camera	c:/temp/barramundi.mp4	⋮
Local file	Site BG	Demo	Demo-Camera	c:/temp/barramundi.mp4	⋮
Local file 2	Site BG	Demo	Demo-Camera	c:/temp/barramundi.mp4	⋮
Local file 3	Site BG	Demo	Demo-Camera	c:/temp/barramundi.mp4	⋮
Local file 4	Site BG	Demo	Demo-Camera	c:/temp/sample5.mp4	⋮
Local File 5	Site BG	Demo	Demo-Camera	c:/temp/Motorisert_natt.mp4	⋮
Local file 6	Site BG	Demo	Demo-Camera	c:/temp/Scalemotor.mp4	⋮

Full screen configuration tool with improved workflow and search options.

FeedStation Integration feature



- Camera Groups ^
- Default Configuration
- 2 split
- Cameras
- Sites
- Feeding Integration


### Default Configuration

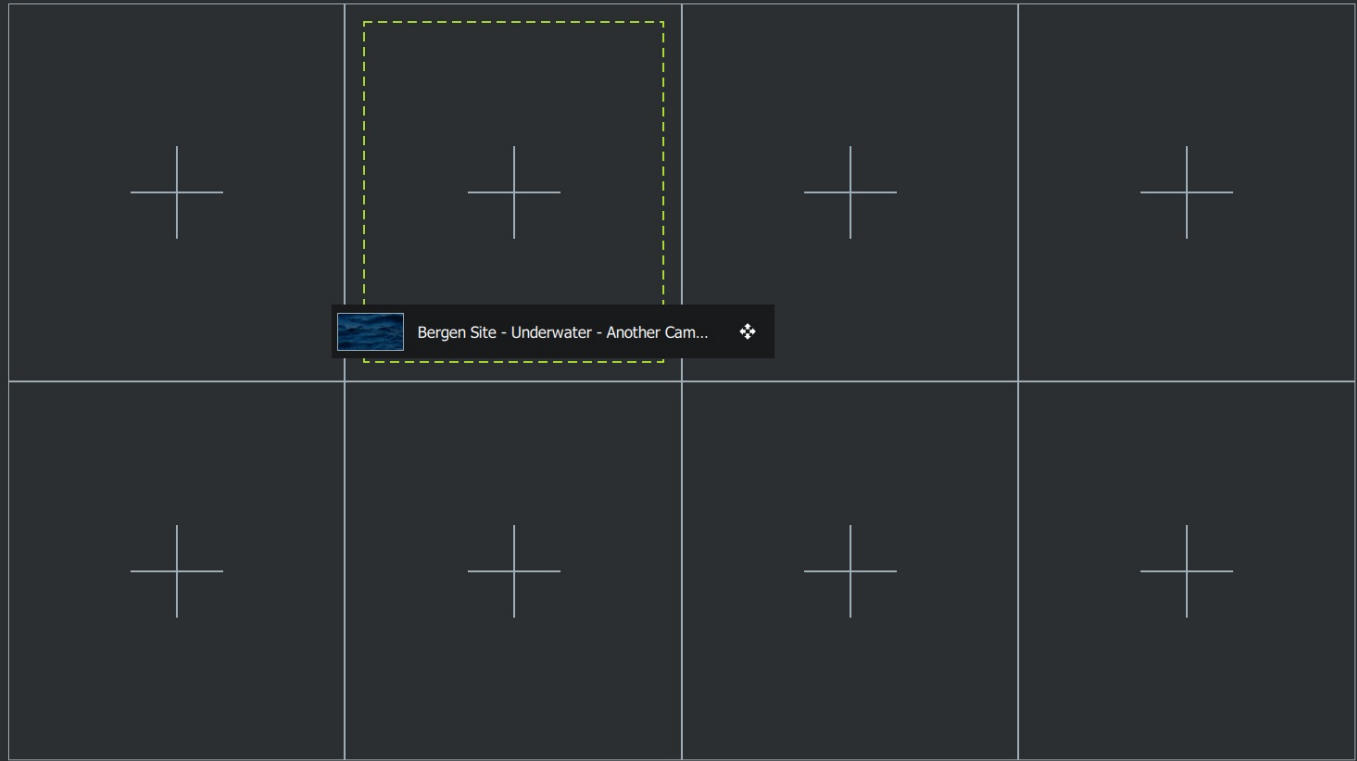
Choose camera layout

4 frames   single   9 frames   2 frames   6 frames   7 frames   6 frames   8 frames   **8 frames**

Frame aspect ratio 16:9 ▾

Drag camera icon to desired frame

 Bergen Site - Underwater - Bergen cam ❖



SAVE SETUP

*Drag and drop function when adding cameras to cameragroup*



- Camera Groups
- Group 1
- Cameras
- Sites
- Feeding Integration

### Group 1


Choose camera layout

4 frames   single   9 frames   2 frames   6 frames   7 frames   6 frames   8 frames   **8 frames**

**\*INTERNAL USE ONLY**

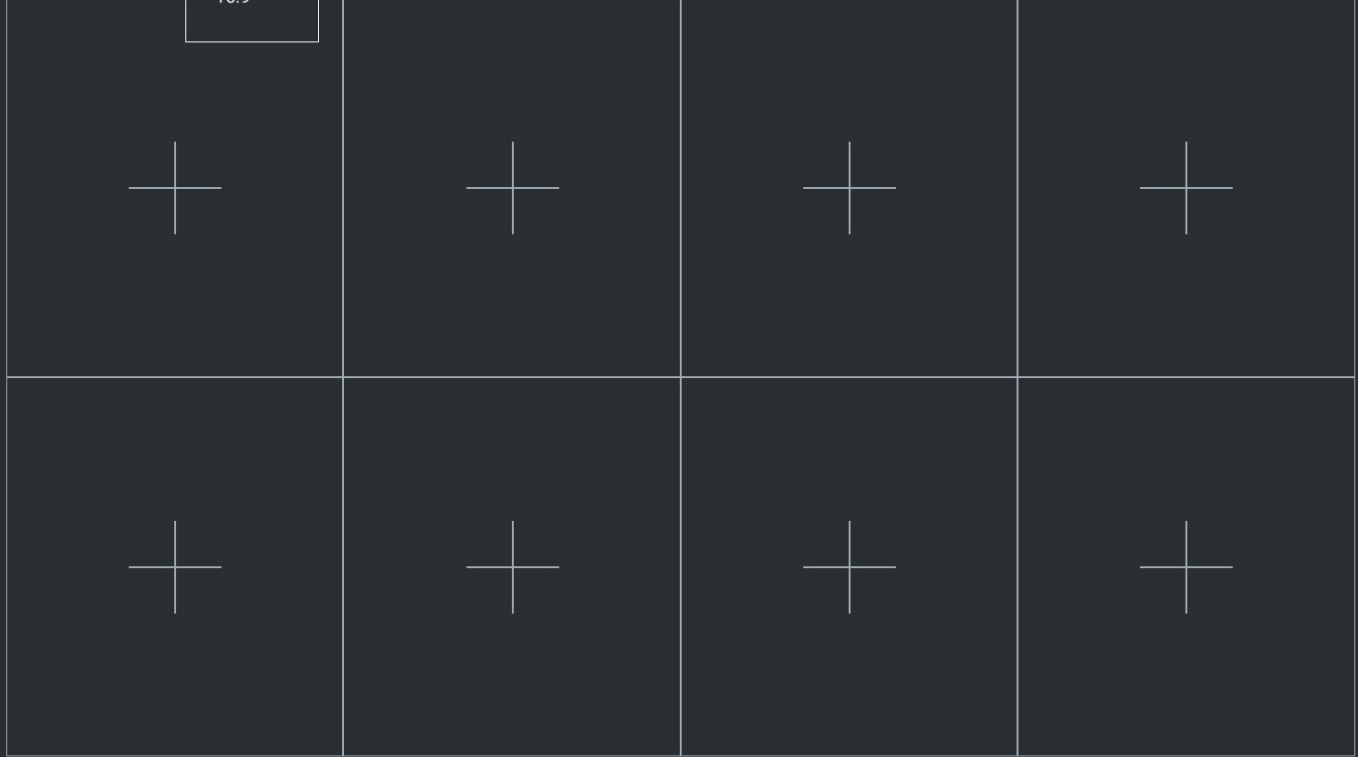
Search cameras

Drag camera icon to desired frame

 Site BG - Underwater - Cam BG

Frame aspect ratio

4:3  
4:3  
16:9



SAVE SETUP

*New 2x4 stream layout to utilize UltraWide screens*



Vision

Default Configuration 2 split

Monitors 2

Camera Control



Winch Control

Bergen Site • Bergen cam



Zoom

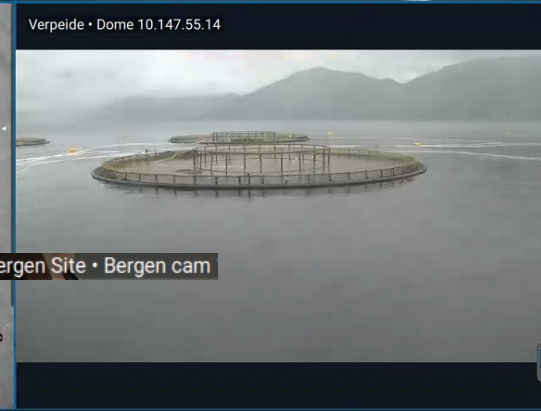


Preset \*\*\*

Choose preset

Bergen Site • Bergen cam

Settings ^



New 2x4 stream layout to utilize UltraWide screens



- Camera Groups ^
- Group 1
- Cameras
- Sites
- Feeding Integration

### Group 1

Choose camera layout

4 frames   single   9 frames   2 frames   6 frames   7 frames   6 frames   8 frames   8 frames

Search cameras

Drag camera icon to desired frame

Site BG - Underwater - Cam BG

Frame aspect ratio 4:3 ^

- 4:3
- 16:9

SAVE SETUP

*New camera group option – select between 4:3 or 16:9 aspect ratio*



# 16:9 aspect ratio support



# 16:9 aspect ratio



*Vision 1.2.X only supported 4:3 format*



*Vision 2.0 supports both 4:3 format, and 16:9 format.*

*ScaleAQ's underwater HD, Dome and Surface cameras supports 16:9 so with Vision 2.0 the customer can utilize more of the screen for videostreams*



erd 10 10.19.90.100



8573 kg of  
11000 kg



0.0 m/s



0.01 bar

Intensity

- 1,2 +

START

Position  
14.1 M

Temperature  
10.8 °C

erd 12 10.19.90.120



8716 kg of  
11000 kg



0.0 m/s



0.01 bar

Intensity

- 1,2 +

START

Position  
2.9 M

Temperature  
11.1 °C

erd 4 10.19.40.40

Position  
12.1 M

Temperature  
10.6 °C

erd 5 10.19.40.50

Position  
14.2 M

Temperature  
10.9 °C

4:3 format



а • Merd 10 10.19.90.100



8573 kg of  
11000 kg



Intensity

- 1,2 +

START

Position  
14.2 M

Temperature  
10.8 °C

а • Merd 12 10.19.90.120



8716 kg of  
11000 kg



Intensity

- 1,2 +

START

Position  
2.8 M

Temperature  
11.1 °C

Merd 4 10.19.40.40

Position  
12.1 M

Temperature  
10.6 °C

• Merd 5 10.19.40.50

Position  
14.4 M

Temperature  
11.0 °C

Same cameras in  
16:9 format



# Feeding integration

---

Integration between FeedStation and Vision



HN1 • U10

10%

100 kg of  
1 518 kg

20.0 m/s

0.43 bar

Position  
0.0 M

Temperature  
31.7 °C

Oxygen  
86.2 %



**Vision 2.2**

Feeding overlay



HN1 • U10

10%

100 kg of  
1 518 kg

20.0 m/s

0.43 bar

Intensity

– 2.2 +

STOP

Position

0.0 M

Temperature

31.7 °C

Oxygen

86.2 %



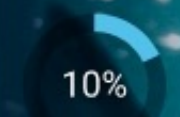
## Vision 2.2

Feeding overlay  
and control  
intensity –  
Start/stop with  
gamepad



HN1 · U10

⚠ Sensor failure



100 kg of  
1 518 kg

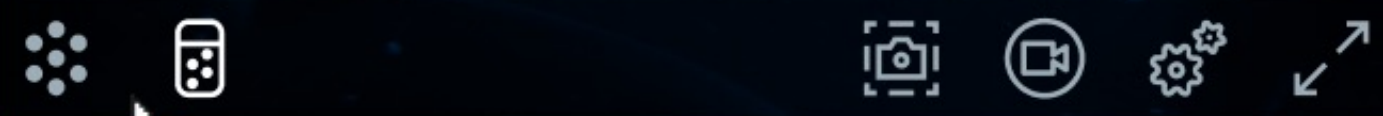


Position  
**0.0 M**

Temperature  
**31.7 °C**

Oxygen  
**86.2 %**

Pellet count  
**• Medium**



Feeding overlay    Off  On

Configure feeding controls

Turn Feeding overlay on and off in camera menu



# Feeding with gamepad

- Start/stop feeding
- Intensity up/down
- Show/hide overlay





# Vision 2.2 & Pellector

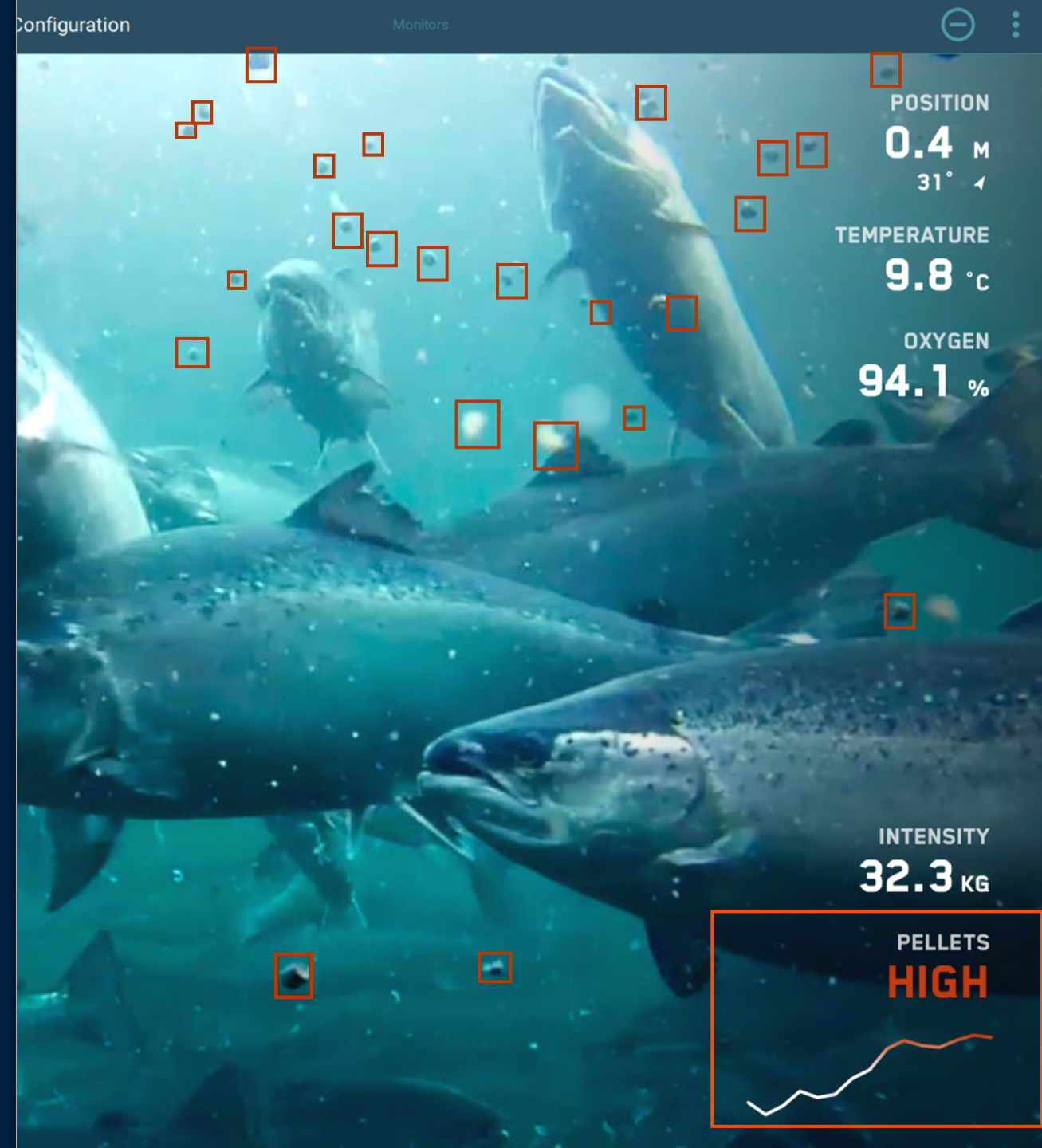
---



# The Pellector

ScaleAQ's pellet algorithm «Pellector» enhances feeding efficiency and reduces feed spillage.

- 1: Easy installation
- 2: DIY setup
- 3: Adjustable features:
  - Red markings (optional)
  - Count levels; **LOW**, **MEDIUM** or **HIGH**.
  - No of pellets in graphics (optional)
  - Trend-graph
  - Alarm when too many pellets





Camera Control



Winch Control



Zoom



Indre Bringeneset • U10

Position 0.0 M

Temperature 31.7 °C

Oxygen 86.2 %

100 kg of 1 518 kg

20.0 m/s

0.43 bar

Edit

Pellet count ● Low

Indre Bringeneset • U10

Position 0.0 M

Temperature 31.7 °C

Oxygen 86.2 %

100 kg of 1 518 kg

20.0 m/s

0.43 bar

Edit

Pellet count ● Medium

Indre Bringeneset • U10

Position 0.0 M

Temperature 31.7 °C

Oxygen 86.2 %

100 kg of 1 518 kg

20.0 m/s

0.43 bar

Edit

Pellet count ● Medium

Indre Bringeneset • U10

Position 0.0 M

Temperature 31.7 °C

Oxygen 86.2 %

100 kg of 1 518 kg

20.0 m/s

0.43 bar

Edit

Pellet count ● Medium

Indre Bringeneset • U10

Position 0.0 M

Temperature 31.7 °C

Oxygen 86.2 %

100 kg of 1 518 kg

20.0 m/s

0.43 bar

Edit

Pellet count ● High

Indre Bringeneset • U10

Position 0.0 M

Temperature 31.7 °C

Oxygen 86.2 %

100 kg of 1 518 kg

20.0 m/s

0.43 bar

Edit

Pellet count ● High

*Red blinking frame on streams with HIGH pellet count*

Preset ...

Preset 4

Settings



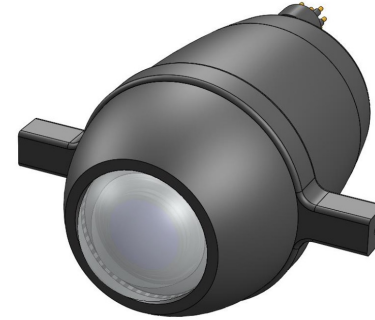
# New camera and CIU series

---



# New camera products in development

Release in Q3-Q4 2021



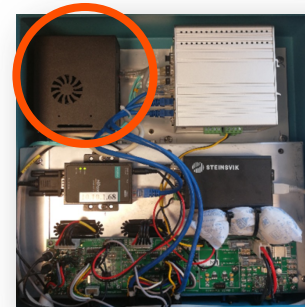
## Orbit 3700 – Fixed camera – Q3

- Super light sensitive HD fixed camera
- Large 120 deg Field of View (fish eye)
- Powered by PoE
- Support ONVIF
- Possibility of Dissolved Oxygen sensor



## Orbit 4000 – Pan/Tilt camera – Q4

- Most light sensitive 4K camera available
- Possibility of Dissolved Oxygen sensor
- Powered by PoE
- Support ONVIF
- Motorized Iris



## Orbit AI Module – In sale

Enables edge computing of Pellet Detection as an IoT device.



## MB3100 – Q3

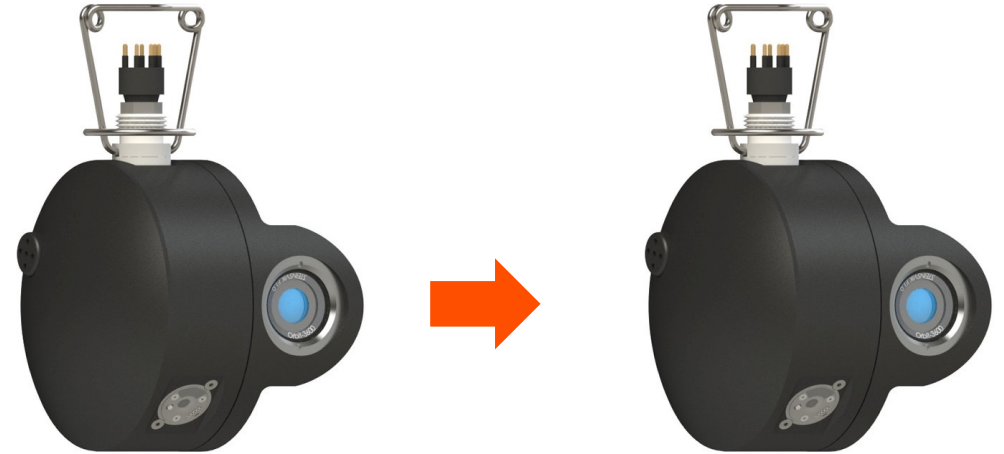
Mobile inspection solution for digital cameras with sharp high resolution screen, joystick for pan/tilt and video recording



# New digital camera 3450/3650

Replacement for 3400/3600

Image sensor is end of life



Orbit 3400/3600

Orbit 3450/3650

- Same form factor – build on same camera architecture
- 50% more light sensitive than current digital 3400/3600 cameras
- Compatible with all digital PSU's
- 3400/3600 will be produced to to end of August – then 3450/3650 will start